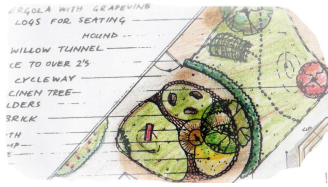


Why A Nature PlayScape?

Childhood today is a vastly different reality to what it has been in the past.

Children are often spending a large amount of time in a 'restricted' daily environment. As our world comes to a deeper understanding of how climate, limited resources, economic sustainability will impact our future, our children's rights & needs to be in nature are at extreme risk.

If taking the children to the forests, beaches and flowing rivers is not a reality, let us help you to make local solutions & allow nature to be the teacher.



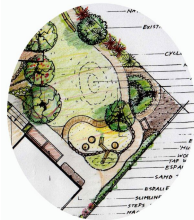
Who we are

Our designs grow from a team approach through a collaboration of professionals.

Landscape designer **Jo Gore** is key to the design process and develops all concept plans.

Anna Gentry assists with permaculture design principles which offer sustainable solutions for living and learning. Her in depth knowledge of edible, sensorial and indigenous plants assists Jo at the concept stage. As an educator, she offers a deeper understanding of the power of nature in childhood development.

Dean Aplin and **Andrea Podesta** are our project management and construction experts.



Also by NaturePlay NZ



Natures Way

Professional development workshops and in centre services. Visit our website for brochure.



Made in Nature

Natural Play products. An extensive catalogue can be viewed from our website.

To find out more or discuss your PlayScape vision

Contact: Anna Gentry / Dean Aplin
NaturePlay NZ
09 434 4349

info@natureplaynz.co.nz

See also www.natureplaynz.co.nz

Nature PlayScapes

by NaturePlay NZ

Connecting the child's heart to the earth's heart



www.natureplaynz.co.nz

What is a Nature PlayScape ?

Our designs create places which suggest to the child ~ play freely and openly, explore and discover, find the magic and hold wonder in the earth and all her natural beauty.

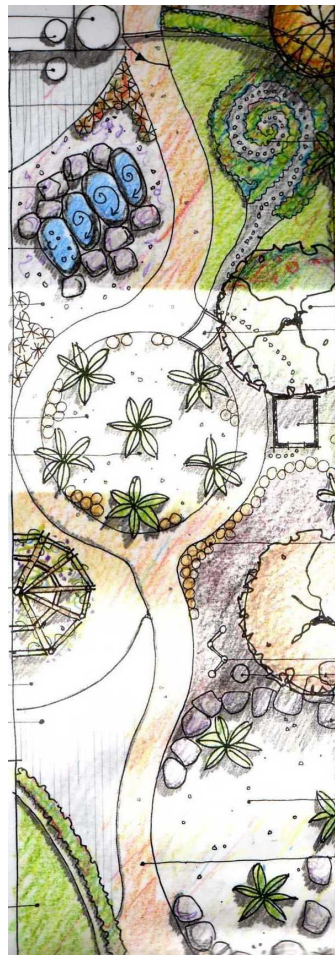
We emphasize the importance of **living nature**.

Beauty and beyond.

As designers of permaculture systems, we take inspiration and create it in our PlayScape designs. We aim to go beyond current landscape design paradigms to create places to grow kaitiaki of the earth.



We can assist you to:



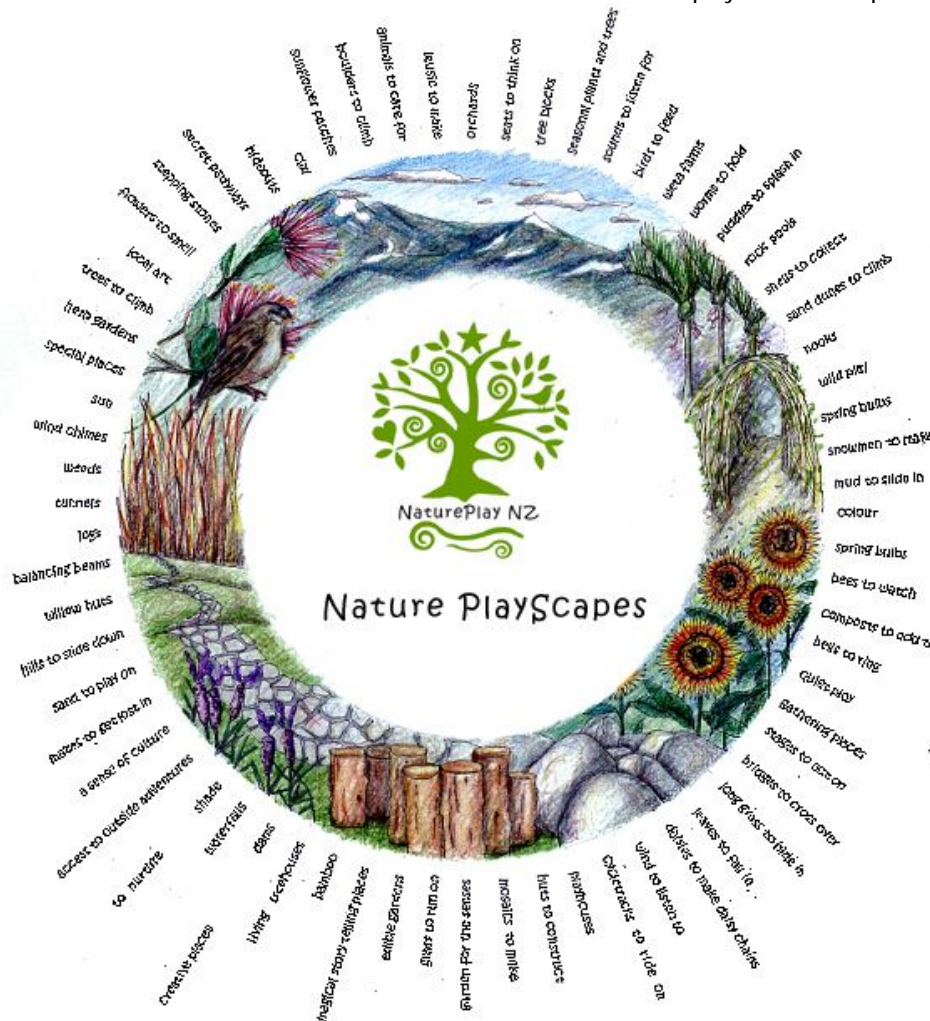
- develop a Nature PlayScape design.
- create incredible solutions to water play, sand play, huts and whares, sound gardens, native bird gardens...& more!
- address the need for "living edible nature" an oasis of plants.
- support the child's physical development with climbing, balancing and movement.
- develop sustainable practices in your centre with staff and children.
- address challenges you may have with your existing outdoor areas.
- makeover your existing outdoor area into a Nature PlayScape.

Nature PlayScapes offer your Centre:

- The development of detailed concept plans for new centres & refurbishing the existing.
- Creative design solutions for specific areas of play.
- Planting plans for edible, sensorial and indigenous PlayScapes.
- Project management and construction services for your Nature PlayScape designs.
- A profound point of difference in your centres program.

Nature PlayScapes offer the teacher:

- A nourishing environment which feeds the soul of the adult and the child.
- An environment where child led learning and play opportunities are endless ... the child's imagination is unlimited in nature.
- Opportunity for simple change in the environment - through the seasons, through the creative spirit of the child, the space evolves
- An environment which calms the child and assists them to find balance in their emotional, mental, physical and spiritual needs.



Nature PlayScapes offer the child:

- A place to find a sense of self and balance.
- A place to find a connection to the earth – key in the child's development.
- A place to discover, make sense, find connections, wonder, explore, challenge, and find freedom.
- A place to develop all their senses.
- A place to create and imagine.
- A place which is forever evolving and changing with the cycles of nature

Nature PlayScapes offer the community:

- An opportunity to be involved in the creation of a Nature PlayScape.
- To learn & grow with the children.
- To support the children to become great stewards of the land.
- To help create natural environments providing a sense of culture, locality & place, which are an asset to the community.